



Evan Lightner, *Chest on Stand Five*, ebony composite veneer, antique reclaimed piano ivory, holly, soft maple

Joshua Almond, *Of Sex and Death*, basswood

artspace

201 E. Davie Street
Raleigh NC 27601
919-821-2787
www.artspacenc.org

email: info@artspacenc.org

staff

Mary Poole, *Executive Director*
Lia Newman, *Director of Programs & Exhibitions*
Rae Marie Czuhai, *Development Director*
Beth Bergartt, *Business Manager*
Nealy Andrews, *Program Assistant*
Katie Gunter, *Administrative Assistant*

design

Graham McKinney

on the cover, left to right:

Kyle Fleet, *Lily Pad Table*, walnut, hard maple, curly maple, bronze

Dindy Reich, *Forest and Fish*, sterling silver, brass, actinoceras

Helen Otterson, *Untitled*, ceramic and glass



Anthony Ulinski, *Reliquary Geometric # 2*, hardwoods and milk paint



fine contemporary
craft

Alfred D. Ward, *juror*

juror's biography

Alfred D. Ward was Appointed Professor of Art and Design at the University of London in 1966. In 1974 he became the Head of the Department of Silversmithing, Jewelry, and Allied Crafts at the Sir John Cass College of Art in London. As a consultant designer for Spink & Sons in London (by Appointment to her Majesty the Queen), he designed and produced pieces for the Royal Family, Revlon of Paris, Covent Garden Opera House, Margo Fonteyn, and the Royal Air Force. Having moved to the United States in 1981, he taught at the University of Michigan and the Center for Creative Studies in Detroit. In 1985, he became the Director of the Appalachian Center for Crafts in Tennessee and in 1989 became the Chair of Art and Design at Winthrop University in South Carolina. As an internationally known designer, he has work in many museums and collections. In 2006 The Victoria and Albert Museum in London purchased a piece of his silverware for their permanent collection. Ward continues to work as an artist in Rock Hill, SC and spends much time promoting and teaching design/technology in schools and teacher education programs at the graduate level.

inspiring creative energy!

© 2010

Artspace inspires creative energy! A non-profit visual art center, Artspace presents award-winning exhibitions, educational programs, and artist studios open to the public. Approximately 100 artists are professional members of the Artspace Artists Association with 35 artists maintaining studios at Artspace. Artspace is open to the public Tues.-Sat., from 10 AM-6 PM and on the first Friday of each month for the First Friday Gallery Walk until 10 PM. Studio hours vary.

Admission is free; donations are appreciated. Guided tours of exhibitions and artist studios are available for groups of 10 or more. Located in Historic City Market in Raleigh at the corner of Blount and Davie streets. Artspace is supported by the North Carolina Arts Council; by the United Arts Council of Raleigh and Wake County; by the Raleigh Arts Commission; and by individual members, corporate donors; and private foundations.

For more information, please visit www.artspacenc.org



December 3, 2010–January 15, 2011

Gallery 1

fine contemporary craft

Fine Contemporary Craft is a Biennial National Juried Exhibition. The purpose of the exhibition is to recognize individual artists working in a variety of craft media and to provide exposure for their work. This year's exhibition was selected from a competitive pool of submissions by artist Alfred D. Ward.

juror's statement

It was my pleasure and privilege to select works for this year's *Fine Contemporary Craft Biennial National Juried Exhibition*. From the beginning of my review it was clear that this exhibition would include some of the finest craftsmen and craftswomen in the nation. Due to the extremely high level of works submitted, I found it challenging to decide on this final grouping, but I believe it does represent the very top of an incredibly strong body of submissions.

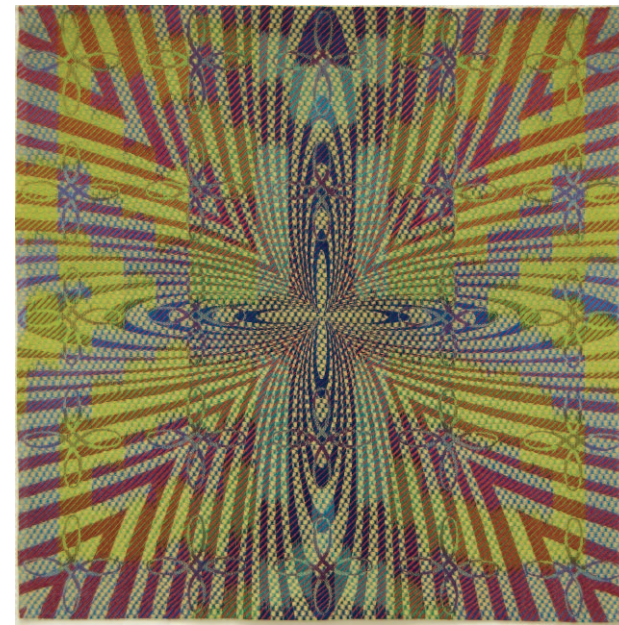


I am sure you will enjoy this tremendous outpouring of contemporary design, fine craft, and remarkable creative thought evidenced in this show. Although it was not my intention, the exhibition has naturally divided into the presentation of all major craft media. From the exceptional carving and construction of wooden objects to the small-scale refinement of jewelry — from intricate weavings and whimsical ceramics to the sculptural baskets and mechanical sculptures — it all portrays an artistic energy that inspires our imagination.

Please enjoy looking, studying, and wondering about these creations and the individual designer behind each one. They have given of themselves to each material, through trial and error, hard work and persistence, and tenacity and commitment, to finally present us with such distinctive expressions of their craft. Finally, let us congratulate and thank them for promoting and maintaining the American tradition of fine contemporary crafts.

— Alfred D. Ward

Stephen Sidelinger, *Pirates I*, embroidery floss on canvas

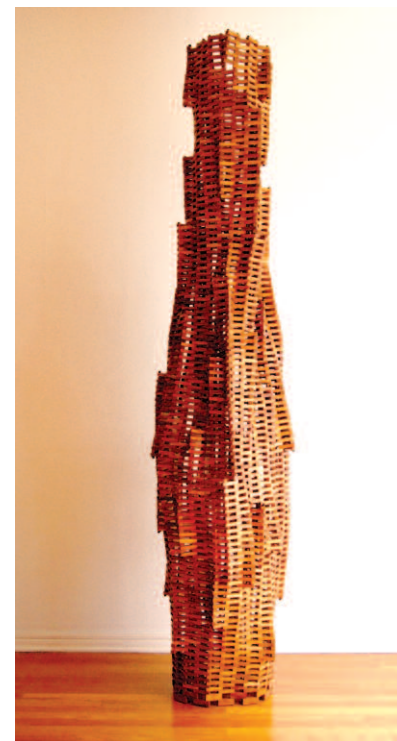


Robin Haller, *Everything In Its Own Time*, handwoven



Megan Clark, *Stingray Donut Ring*, sterling silver, 14k gold, diamond, stingray skin

accepted works



Matt Gagnon, *Squeeze Lamp 80*, wood, elastic, electric lamp

Joshua Almond, *Of Sex and Death*, basswood

Brian Andrews, *Fixed Landscape 3*, basswood

David Bogus, *The Optimist Luggage*, ceramic

Megan Clark, *Stingray Bracelet*, sterling silver, citrine, stingray skin

Megan Clark, *Stingray Donut Ring*, sterling silver, 14k gold, diamond, stingray skin

Susanne Clawson, *Solar Flare*, textile

Ken Derengowski, *Diamond Ring #2: Kimberley*, sterling silver

Ken Derengowski, *The Kimberley Enamel*, vitreous enamel on copper

Kat Ely, *Weeping Dandelion*, silver, copper, glass vials, dandelion seeds, mahogany

Kyle Fleet, *Lily Pad Table*, walnut, hard maple, curly maple, bronze

Michael Frels, *Shadow on Wood*, sewn cyanotypes on American cotton, cotton thread, adhesive

Michael Frels, *Clouds in Water, (Sugar Basin in Lake Jackson, Texas)*, sewn cyanotypes on American cotton, cotton thread, adhesive

Matt Gagnon, *Squeeze Lamp 80*, wood, elastic, electric lamp

John Gilliam, *Vigna*, mixed media

John Gilliam, *Cipolla*, mixed media

Robin Haller, *Everything In Its Own Time*, handwoven

Beverly Hertler, *Seasons I*, fiber/mixed

Christina Jimerson, *Family Flowers*, fabric flowers, ink, paper

Judith Kohn, *Indigo Letter*, mixed media

Bob Kopf, *Pair of Teak Tables*, teak

Mark Koven, *Communal Blow*, interactive sculpture, wood, wind turbine, dragonfly wings

Jan Kransberger, *Blue Girl with Orange Bird*, kiln cast glass with fine silver inclusions

Jan Kransberger, *Illusions of Grandeur*, kiln cast glass with sterling silver inclusions

September Krueger, *Boreal Light*, silk-screened whole cloth quilt, appliqué and embroidery

Evan Lightner, *Chest on Stand Five*, ebony composite veneer, antique reclaimed piano ivory, holly, soft maple

Dorothy McGuinness, *Seven Fingers*, watercolor paper, acrylic paint

Dorothy McGuinness, *Conjoined*, watercolor paper, acrylic paint

Masako Onodera, *Germination 3*, wool, found objects, brass, cotton, pearls, nickel silver

Helen Otterson, *Heliconia Perennial*, ceramic and glass

Helen Otterson, *Untitled*, ceramic and glass

Abraham Pardee, *Succuboids*, forged mild steel, bent laminated bendy-ply, milk paint

Sharron Parker, *Perfect Storm*, handmade felt

Sharron Parker, *Rockface*, handmade felt

Susan Parrish, *Don't Kill the Music*, handbuilt ceramics and mixed media

Leslie Pearson, *Given and Received*, wooden stand, woven cloth, handmade book, photographs

Dindy Reich, *Forest and Fish*, sterling silver, brass, actinoceras

Dindy Reich, *Icon with Cradled Pearl*, sterling silver, carnelian, actinoceras, brass



Dorothy McGuinness, *Conjoined*, watercolor paper, acrylic paint

Noah Riedel, *Stem-Showing Vase*, stoneware

Davina Romansky, *Planted Seed*, electroplated copper, silver and pearl

Davina Romansky, *Bird Forms*, sterling silver, gold, black diamonds, yellow and blue sapphires

Ann Roth, *Passages 2*, cotton; hand-dyed ikat warp and weft, handwoven

Stephen Sidelinger, *Pirates #1*, embroidery floss on canvas

Stephen Sidelinger, *Crossings*, embroidery floss on canvas

Madelyn Smoak, *Relic of the Great Cicada Wars*, mixed metals helmet

Anthony Ulinski, *Reliquary Geometric # 2*, hardwoods and milk paint

Sarah West, *Patterns of Being*, sterling silver, vellum, acetate, brass

Erin Williams, *Sonance Amplification Agent*, brass, copper, bronze, mixed wood, found chair, castors

John Wofford, *Stool*, maple and aluminum

Margaret Yaukey, *Neckpiece #6*, sterling silver, mica, bronze, cast poly resin